

Walking Tour of Deming

Wednesday, 11 August 2010 00:00 - Last Updated Tuesday, 25 November 2014 12:43



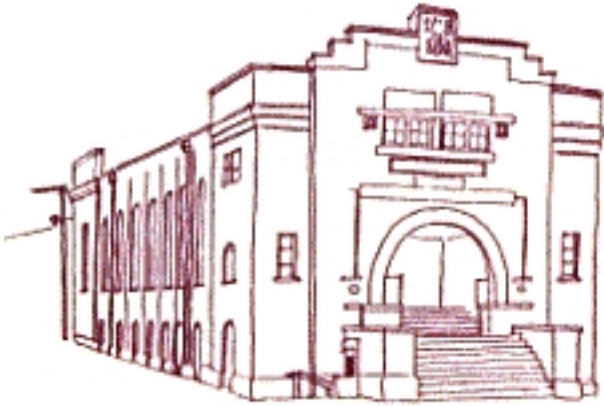
Deming's downtown commercial buildings retain much of their historic integrity and remain part of a historic zone.

Thirty-seven (37) properties, out of 134 properties within the commercial district, have retained their historical significance.

At the present time, 16 buildings have been placed on the State Historic Register. Four of the 16 buildings are also on the National Register of Historic places.

Start your "Historic Landmark Walking Tour" at the Deming Museum and Customs House and go north on Silver following the map. Return to the Museum and drive south or walk to the Luna County Courthouse Park and enjoy a relaxing moment at the park. The park is 4 blocks south of the Luna Mimbres Museum.

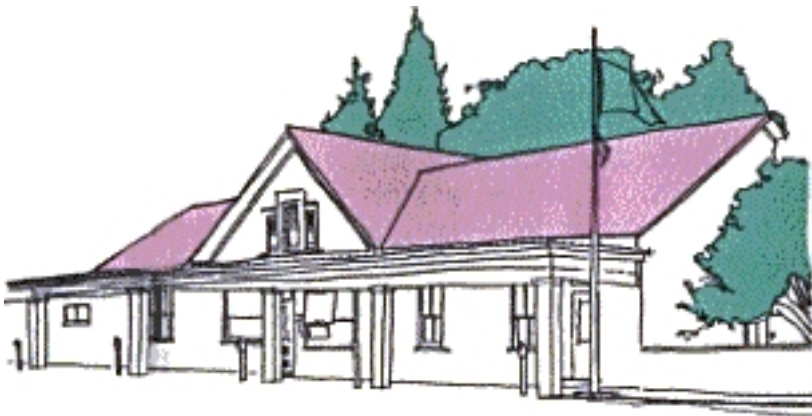
See below for descriptions of buildings on walking tour.



1. Deming Luna Mimbres Museum

301 S. Silver

Built as an armory in 1917, it is a classic red brick, two story structure with decorative front concrete



2. Custom House

304 S. Silver

Sanborn maps show it was essentially built by 1889. It was then reportedly known as the Custom Ho



3. Baker Hotel

120-124 S. Silver (corner of Spruce and Silver)

The two-story corner building with signboards, bulkheads, bay doors and a metal hood over lower floor.

4. Diamond Furniture Warehouse

112-114 S. Silver

These two buildings were completed by 1886, one as an office and hay store; the other as a livery and blacksmith. It is decorative brick, with mission features. It has multilineal mission parapets with brick relief. It still retains its historic appearance. It is listed on the State Register as part of the Silver Avenue Historic District.



5. Palmas Restaurant

110 S. Silver

This building was built in 1902 and was originally the power source for the Deming National Bank. La

6. Old Deming National Bank

122 E. Pine

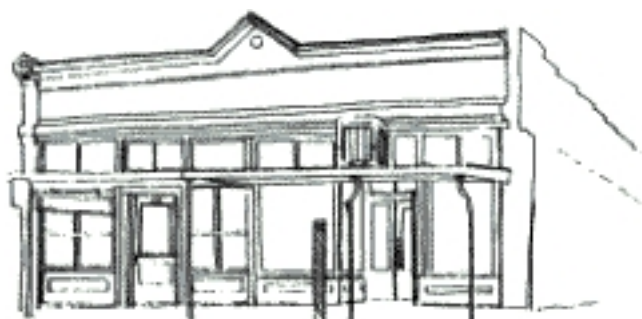
Build and designed in 1893 by Sherpe and Koker of St. Louis, with recessed door, glass brick rear windows and iron buttresses in Richardsonian Romanesque style. The second floor windows are round arches with keystones. The interior has multiple staircases, a large safe and wall murals. Listed on the State Register as part of the Silver Avenue Historic Districts.



7. Bargain Barn

105-107 N. Silver

Completed in 1917 and expanded in 1930. The wood framed plate glass windows, signboard and bu



8. Antique Shop

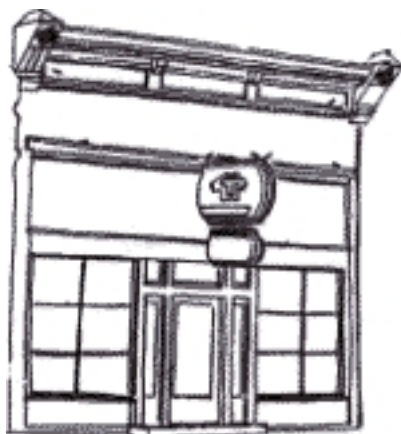
114. N. Silver

Completed in 1913 this opened as a restaurant. It has a brick exterior and low gabled parapet with a

Star Barber Shop

116 N. Silver

Completed in 1913. Opened as a pool hall, it later became a harness shop. Original wood over adobe is replaced by the present brick exterior. It has a gabled front parapet, stepped side parapets and wooden bulkheads. Also listed on the State Register of Cultural Properties.



9. The New T-Shirt Print Shop

118 E. Pine

Built in 1886 it expanded to the rear in 1902. Over the years it has been a grocery store, gentleman's

10. Morgan Hall

109 E. Pine

Built in 1908, It was originally the City Hall and fire station. It was remodeled in 1938 by the W. P. A. In Spanish Pueblo Revival Style. It has a recessed portico entry with vigas and ornate wood pillars with lintels and corbels. It has metal casement windows. The east addition has a

portico with an ornate wood door. There is a large garage door to the old fire station at the rear of the building. Meeting rooms, a stage and auditorium with high ceilings are still used for meetings and stage productions and is an historic community center.



11. [Deming Arts Center](#) □

100 S. Gold (corner of Pine & Gold)

This building was rebuilt after a 1914 fire. Modern blonde brick exterior has keystone window motifs.



12. Waymaker Bookstore

110 S. Gold

Completed in 1917, his building was used as offices and a Masonic Hall. This is a classic two story b



13. J.A. Mahoney Building

122 S. Gold

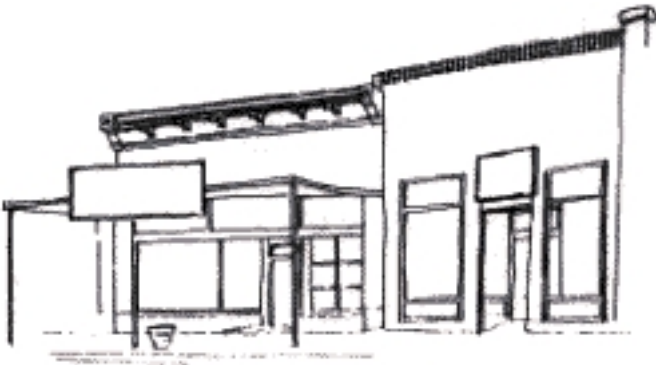
Completed in 1912, it was one of Deming's important commercial structures from the 1920's to the 5



14. Mimbres Brewing Company

200 S. Gold

Built in 1886, it has been a stable, a meat market and other businesses. The front is brick with an ins



15. Liberty Finance

202 S. Gold

Built in 1893, with wood framed windows. It has been a cobbler, grocery store and a bar. The front b



16. Luna County Courthouse

700 S. Silver

The Luna County Courthouse, designed by W.B. Corwin, with tall clock tower and Greek portico was